

ArchT[®] 2008

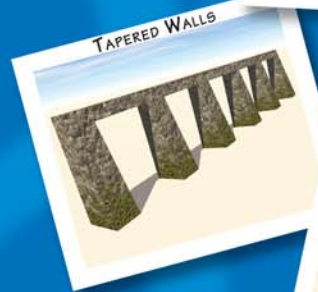
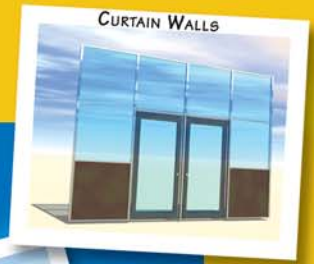
The original easy-to-use styles-based
3D Architectural Design Software

► New Features

- ✓ Curtain Wall and Storefront objects
- ✓ Mansard Style Roofs
- ✓ Walls can be tapered (varying width)
- ✓ New 'Styles' toolbar makes adding or modifying ArchT objects easier than ever
- ✓ Rendering Materials now supported in IntelliCAD
- ✓ 2D Projector now supported in IntelliCAD
- ✓ Sections now supported in IntelliCAD

► Key Features

- ✓ Intelligent walls, doors, windows, roofs & stairs
- ✓ Floor Plans, Sections, Elevations, Detailing
- ✓ Automatic Schedules and Customizable Reporting
- ✓ Native .DWG format means others can use your drawings
- ✓ Keynoting with automated legend creation
- ✓ AIA or Custom Layer Management
- ✓ Curtain walls & Store fronts
- ✓ Time-saving utilities including parking layout, column grid layout, reflected ceiling plans, multiple floors, curved and spiral stairs and much more



Over 7000
2D & 3D blocks



ArchT has received many awards including "Highly Recommended" ratings by Cadalyst Magazine and "Editors Choice" by Cadence Magazine. These accolades mirror the feelings of 1000's of users who are dedicated to ArchT's ease of use, flexibility, and power.

ArchT allows designers to work in 2D or 3D with equal ease. Rendering materials may be preassigned to objects so that once the model is built it can be easily rendered in IntelliCAD, AutoCAD, or Accrender, and creating walk-throughs is a snap. ArchT comes with over 7000 2D and 3D blocks that are ready for rendering.

ArchT's styles allow you to create libraries of unique walls, doors, windows, and other building objects that you can use over and over again. Change the style and all objects using that style will update automatically to reflect the change. Easily change all doors and windows to a different type, or select only a few.

ArchT's reporting features allow you to create custom schedules of any objects in the model. Door schedules, window schedules, finish schedules, or area usage reports can be created with ease. You can attach data to any object and create custom reports with user-defined formulas for added power and flexibility. Keynoting is also a standard feature built into ArchT.

Of course ArchT includes walls that automatically clean up the intersections, or break when you insert a door or window, but it also includes many time-saving routines for column grids, area bubbles, parking stalls, and managing multi-level designs, just to name a few.

ARCHT[®] 2008

Schematic Design

- Massing studies
- Layout design
- Design visualization
- Presentation / walk throughs

Design Tools for 2D & 3D

- Walls, windows, doors
- Stairs (standard, curved, spiral)
- Column grid layout
- Roofs
- Space planning
- Multistory support
- Pre-defined casings
- Automated dimensioning
- 2D projections of any 3D view
- Surface area calculation from glass, sash, frame & wall

Layers

- Automated layering
- AIA Short & Long forms
- Six other pre-defined systems
- User-configurable
- Master layer controls

Styles

- Doors, walls, windows, roofs, stairs
- Predefined styles
- User-defined styles
- Global style update
- Selective style update

Legends

- Electrical / Mechanical / Plumbing
- Keynoting with automated legends
- Over 20 schedule templates - door, window, room finish, furniture summary and others

Walls

- Wall styles with multiple components
- Swap styles for existing wall
- Automated wall cleanup
- Curved walls
- Multiline walls
- Hatched or Solid fill walls
- Tapered walls

Roofs

- Hip, gable, shed, polygon, mansard
- Dormers
- Roof assemblies - fascia, roof exterior, roof interior, and soffit
- Commercial and residential styles supported

Project Management

- Style & environment customization by application or by project
- Network project setup

Construction Documents

- Floor plans
- Reflected ceiling plans
- Automated elevations and sections
- Demolition plans
- Site plans
- Records and Reports across multiple drawings
- Quantity take-off reports
- Automatic wall dimensioning
- Annotation symbols

Construction Administration:

- Quantity take-off reports
- Modify data options
- Global editing of graphics and attributes
- Area calculation and annotation
- Surface area calculations

Layout Routines

- Lavatories, Stalls, Urinals
- Handicap stalls
- Handrails
- Column grids
- Parking layout (2D)

Integrated with AccuRender and IntelliCAD /AutoCAD Built-in Rendering engines

- Define materials by object, assembly, or layer
- Complex material mapping
- Rendering settings saved in drawing

Extensive Symbol Library

- 7,000 2D and 3D blocks
- "Render-friendly" 3D blocks
- Steel and wood detailing- S beams, W beams, angles, channels
- Access reference material from Architectural Graphics Standards
- Site furnishings
- Landscape symbols - 2D / 3D
- Door symbols (2D/Elev/3D)
- Window symbols (2D/Elev/3D)
- Plumbing symbols (2D/Elev/3D)
- HVAC symbols (2D)
- Electrical symbols (2D)
- Furniture symbols (2D/Elev/3D)
- Tags symbols (2D)
- Sitework symbols (2D/Elev/3D)
- Landscape symbols (2D/Elev/3D)
- Vehicle symbols (2D/Elev/3D)
- ADA symbols (2D/Elev/3D)
- Cabinets (2D/Elev/3D)
- Hatch patterns

Link to Timberline

- Optional ArchT Precision Link™
- Access Timberline commands within AutoCAD
- Add, identify, modify & create estimating records
- Import/export styles
- Navigator & Style support

General Specifications

- Requires Autodesk IntelliCAD or AutoCAD any version
- RAM: 128MB
- Hard disk space: 80MB minimum, 120MB maximum
- Documentation: On-line Reference, Installation & Performance, Tutorial
- On-line help
- Mouse & Digitizer support
- Stand-alone & network support
- Metric or Imperial units



292 NW Walnut Ave. Suite 100
Dundee, OR 97115
503.487.6051 (phone)
503.487.6052 (fax)
archt@autodsys.com